

## RUBBER-FLEX COLLETS



With same accuracy specification as standard spring collets, the Elastic rubber-metal vulcanization allows a clamping range of +/- 1mm to the nominal diameter. This reduces the need for numerous changeovers when clamping different diameters, saving your time.

Instead of purchasing four additional spring collets to cover the same diameter range you can save up to 50% in investment costs with one Rubber-Flex collet.

### VERSATILE

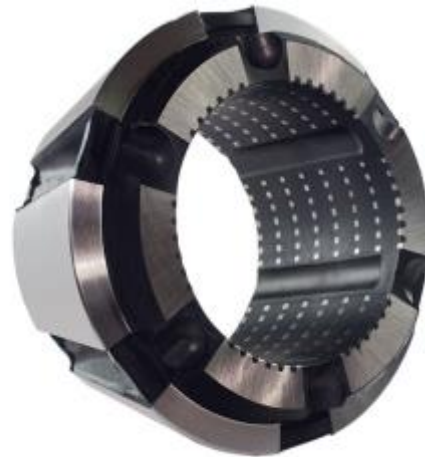
Rubber-Flex collets, type DRFC 673 (173E equivalent) and DRFC 677 (185E equivalent) are available in "Smooth" or "Full Grip" design.

"Smooth" collets are ideal for 2nd Operation work or sensitive workpieces with surfaces that should not be marked. "Full Grip" collets have wider steel segments provide a higher rigidity. These double-serrated collets have an increased clamping force and are especially designed to machine bar material with wide clamping tolerances and high torque.

Due to the unique design Rubber-Flex collets also increase the diameters that your collet chuck can clamp. For example, a QD-CRL42 collet chuck can clamp up to 45mm from the standard 42mm and for a QD-CRL60 collet chuck can clamp up to 65mm from the standard 60mm using Rubber-Flex.



“Smooth” - DRFCxxx-Rxx



“Full Grip” - DRFCxxx-Rxx/R

Series	DRFC673		DRFC677	
DIN6343	173E		185E	
	Part No.	Range (mm)	Part No.	Range (mm)
	DRFC673-R09	7 - 9	DRFC677-R21	19 - 21*
	DRFC673-R11	9 - 11	DRFC677-R23	21 - 23*
	DRFC673-R13	11 - 13*	DRFC677-R25	23 - 25*
	DRFC673-R15	13 - 15*	DRFC677-R27	25 - 27*
	DRFC673-R17	15 - 17*	DRFC677-R29	27 - 29*
	DRFC673-R19	17 - 19*	DRFC677-R31	29 - 31*
	DRFC673-R21	19 - 21*	DRFC677-R33	31 - 33*
	DRFC673-R23	21 - 23*	DRFC677-R35	33 - 35*
	DRFC673-R25	23 - 25*	DRFC677-R37	35 - 37*
	DRFC673-R27	25 - 27*	DRFC677-R39	37 - 39*
	DRFC673-R29	27 - 29*	DRFC677-R41	39 - 41*
	DRFC673-R31	29 - 31*	DRFC677-R43	41 - 43*
	DRFC673-R33	31 - 33*	DRFC677-R45	43 - 45*
	DRFC673-R35	33 - 35*	DRFC677-R47	45 - 47*
	DRFC673-R37	35 - 37*	DRFC677-R49	47 - 49*
	DRFC673-R39	37 - 39*	DRFC677-R51	49 - 51*
	DRFC673-R41	39 - 41*	DRFC677-R53	51 - 53*
	DRFC673-R43	41 - 43*	DRFC677-R55	53 - 55*
	DRFC673-R45	43 - 45	DRFC677-R57	55 - 57*
			DRFC677-R59	57 - 59*
			DRFC677-R61	59 - 61*
			DRFC677-R63	61 - 63
			DRFC677-R65	63 - 65

\* = available as Full grip version

© 2016 Kitagawa Europe. All rights reserved.

Unit 1, The Headlands, Downton, Salisbury, Wiltshire, SP5 3JJ, United Kingdom

**+441725 514 010**

Fax:

**+441725 514 001**

Email:

**export@kitagawaeurope.com**